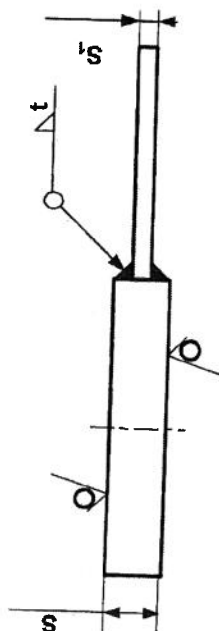
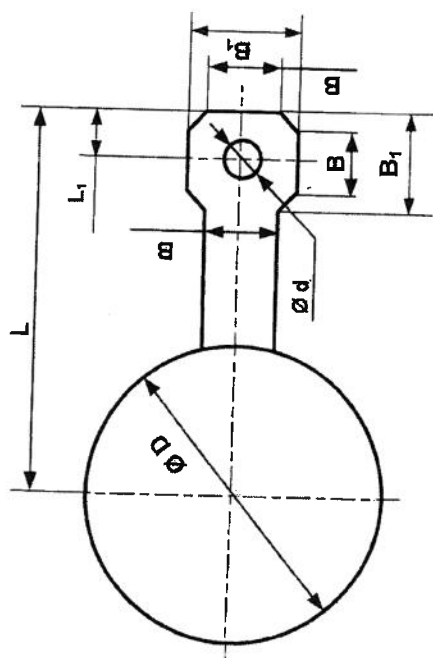


67040808 1224



NPS	D mm	d mm	S mm	S* mm	S ₁ mm	B mm	B ₁ mm	L mm	L ₁ mm	t mm
1/2	51	16	6.5	5	4	25	25	110	12.5	2
3/4	63	19	6.5	5	4	25	25	110	12.5	2
1	70	19	6.5	5	4	32	32	125	12.5	2
1 1/4	79	19	6.5	5	4	32	32	135	12.5	2
1 1/2	92	23	6.5	5	4	32	32	140	17	2
2	108	19	6.5	5	4	32	32	145	17	2
2 1/2	127	23	6.5	5	4	32	32	160	17	2
3	146	23	9.5	5	6	32	32	170	17	2
3 1/2	162	23	9.5	5	6	32	32	180	17	2
4	178	23	12.5	5	8	32	32	190	17	2
5	212	23	12.5	8	8	32	32	205	17	2
6	247	23	16	8	8	32	32	225	17	2
8	305	26	19	10	10	38	38	265	19	2
10	359	29	25.5	10	14	38	38	285	20	2
12	419	32	28.5	10	18	38	38	325	21	4
14	476	32	32	20	20	38	38	355	21	4
16	530	35	36.5	20	22	38	38	385	22	4
18	587	35	41.5	20	24	38	42	420	22	5
20	645	35	44.5	20	24	38	42	450	22	5
22	702	35	44.5	20	24	38	45	470	22	5
24	765	42	54	20	40	38	45	520	26	5

1. H12, h12 js12
2. Aštrās briaunas užapvalinti
3. Ženklininti įkalant: Ds - Ps - indentifikavimo Nr.(šrifto aukštis >=7 mm
4. S - aklės pagal ASME (hidraulikai)
5. S* - laikinos aklės (atakinimui)

[illegible]